

ecoslab® Protected Slab Edge Insulation

ecoslab® - Application

ecoslab® is a thermal insulation system designed to be installed to the outside edges of concrete floor slabs of residential and commercial buildings to assist in improving the performance of buildings energy efficiency. **ecoslab®** can assist in attaining Homestar™ points.

The **ecoslab®** system delivers a protected slab edge insulation in a simple process. It includes core insulation of Climafoam XPS together with sealant and protective (paintable) durable outer render to withstand the rigours of the external ground placement.

Reduce heat loss through the slab edge by installing **ecoslab®** either as a 'Pre-install' or 'Post-install'. Reduce the risk of condensation buildup and structural failure over time at the bottom plate. System application for 90mm or 140mm framing.

ecoslab® - Identifying it

There are two types of **ecoslab®**;

1. **PRE-INSTALL**—for installation PRIOR TO POURING the slab. The product is cast in place adjacent to the external boxing.
2. **POST-INSTALL**—for installation after the slab has been installed for new buildings, or as a retrofit solution for existing concrete foundation buildings.



ecoslab® Pre-Install - Thermal performance

ecoslab® has been designed to achieve at least R1.0 for all standard sizes of slab edge. Higher R-values are able to be produced for 140mm or greater wall frames.

ClimaFoam XPS offers thermal conductivity performance of 0.028W/mK.

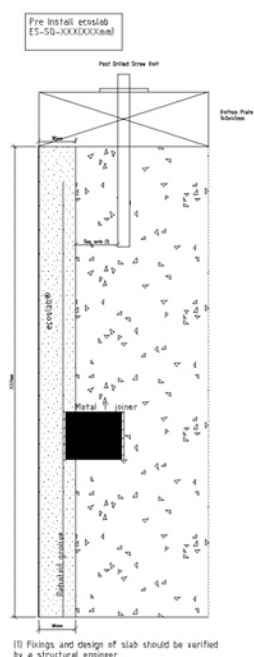
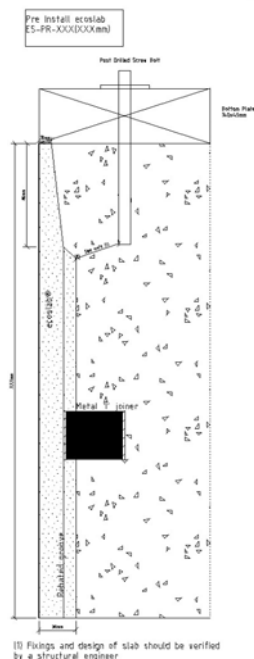
To obtain the installed R-Value when using ecoslab® insulation, refer to the BRANZ House Insulation Guide or other methods including Design Navigator which takes account of the construction being used to give an R-Value for the completed element.

ecoslab® protected thermal insulation, when installed in accordance with the manufacturer's instructions will satisfy at least the 5 year durability clause NZBC B2.3.1 (c). ecoslab® is designed to meet the relevant clauses of NZBC; E2 External Moisture and will assist in meeting H1 Energy Efficiency if required.

ecoslab®'s 'CONTINUOUS' insulation system;

- ecoslab®'s pre-made corners offer continuous reinforced insulation as one unit to the outside corners without thermal bridging through metal brackets or fixings.
- Pre-Install system ensures insulation is continuous up to the bottom plate

ecoslab® - Standard System Components



PRE-INSTALL

For 90mm external wall frames

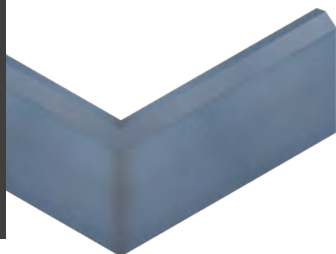
Design Engineer to specify hold-down bolt detail

Heights (mm)	Lengths (mm)	Corners	Corner size l x w x h (mm)
197	2200	Yes	210 x 210 x 197
235	2200	Yes	210 x 210 x 235
300	2200	Yes	210 x 210 x 300
390	2200	Yes	210 x 210 x 390

Additional sizes to suit other slab details can be produced. Allow 3-4 week lead time.

Higher R-Ratings available for 140mm frame walls

Pre-Install supplied with rebated I joiner section, premade outside corners, resin/cement sealing kit for onsite cuts, & patch kit of resin acrylic polymer chip coat.



ecoslab® Post Install - Thermal performance

ecoslab® has been designed to achieve at least R1.0 for all standard sizes of POST-INSTALL. Higher R-values are able to be produced which result in deeper product.

ClimaFoam XPS offers thermal conductivity performance of 0.028W/mK.

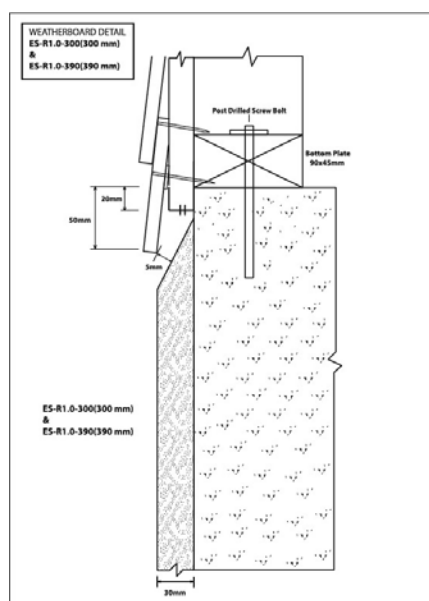
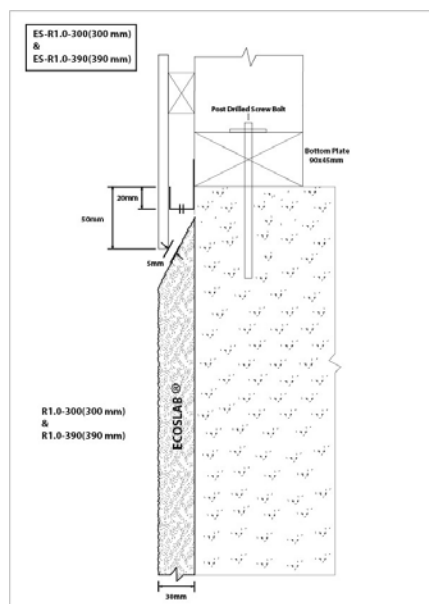
To obtain the installed R-Value when using ecoslab® insulation, refer to the BRANZ House Insulation Guide or other methods including Design Navigator which takes account of the construction being used to give an R-Value for the completed element.

ecoslab® protected thermal insulation, when installed in accordance with the manufacturer's instructions will satisfy at least the 5 year durability clause NZBC B2.3.1 (c). ecoslab® is designed to meet the relevant clauses of NZBC; E2 External Moisture and will assist in meeting H1 Energy Efficiency if required.

ecoslab®'s 'CONTINUOUS' insulation system;

- ecoslab® pre-made corners offer continuous reinforced insulation as one unit to the outside corners without thermal bridging through metal brackets or fixings.

ecoslab® - Standard System Components



POST-INSTALL

Heights (mm)	Lengths (mm)	Corners	Corner size l x w x h (mm)
197	2200	Yes	210 x 210 x 197
235	2200	Yes	210 x 210 x 235
300	2200	Yes	210 x 210 x 300
390	2200	Yes	210 x 210 x 390

Pre-Install supplied with premade outside corners, resin/cement adhesive, sealing kit for onsite cuts, and patch kit of resin acrylic polymer chip coat.

Homestar rating and details available based on design criteria. Note details relative to cladding systems.

ecoslab® - stable product

ecoslab® utilises proven components to deliver a versatile, robust and practical solution.

Insulation: ClimaFoam XPS offers thermal conductivity performance of 0.028W/mK. ClimaFoam is safe to handle, does not require special handling equipment. Extruded Polystyrene (XPS) is a high performance, water resistant and lightweight board of thermal insulation recommended for use under concrete slabs, green roofs, edge beams, cavity walls, external walls and cool rooms.

XPS has a high compressive strength of 250kPa.

ecoslab®'s proprietary reinforced, sealed, resin based cement and polymer acrylic finish provides a durable, robust, high build flexible external face and edge. Care during installation and the building cycle is required. A low level of maintenance is required to ensure a continuous insulation to external face of the slab. Touch up kits are included as part of the system.

ecoslab® does not require a specific concrete mix for slab adhesion.

Why Slab Edge Insulation?

Studies have shown that insulating the edges of exposed slabs significantly improves the performance of the slab. Completing the thermal envelop delivers gains in;

- Energy efficiency
- Performance of underfloor heating systems
- Comfort for the users
- Reduce the risk of structural decay due to moisture/condensation buildup at the bottom plate.

Continuing Climafoam XPS insulation under the slab further improves overall performance.

Support Office
Eco Insulation Systems Ltd
PO Box 77-059
Mt Albert
Auckland 1350

ecoslab@ecoinsulation.co.nz

www.ecoslab.co.nz

ecoslab® - More information

To obtain further information on ecoslab® insulation, how to install, ecoslab® suppliers, or other Eco Insulation products call toll free 0800 400 326 or visit www.ecoinsulation.co.nz

0800 400 326

ecoinsulation

www.ecoslab.co.nz

0800 400 ECO